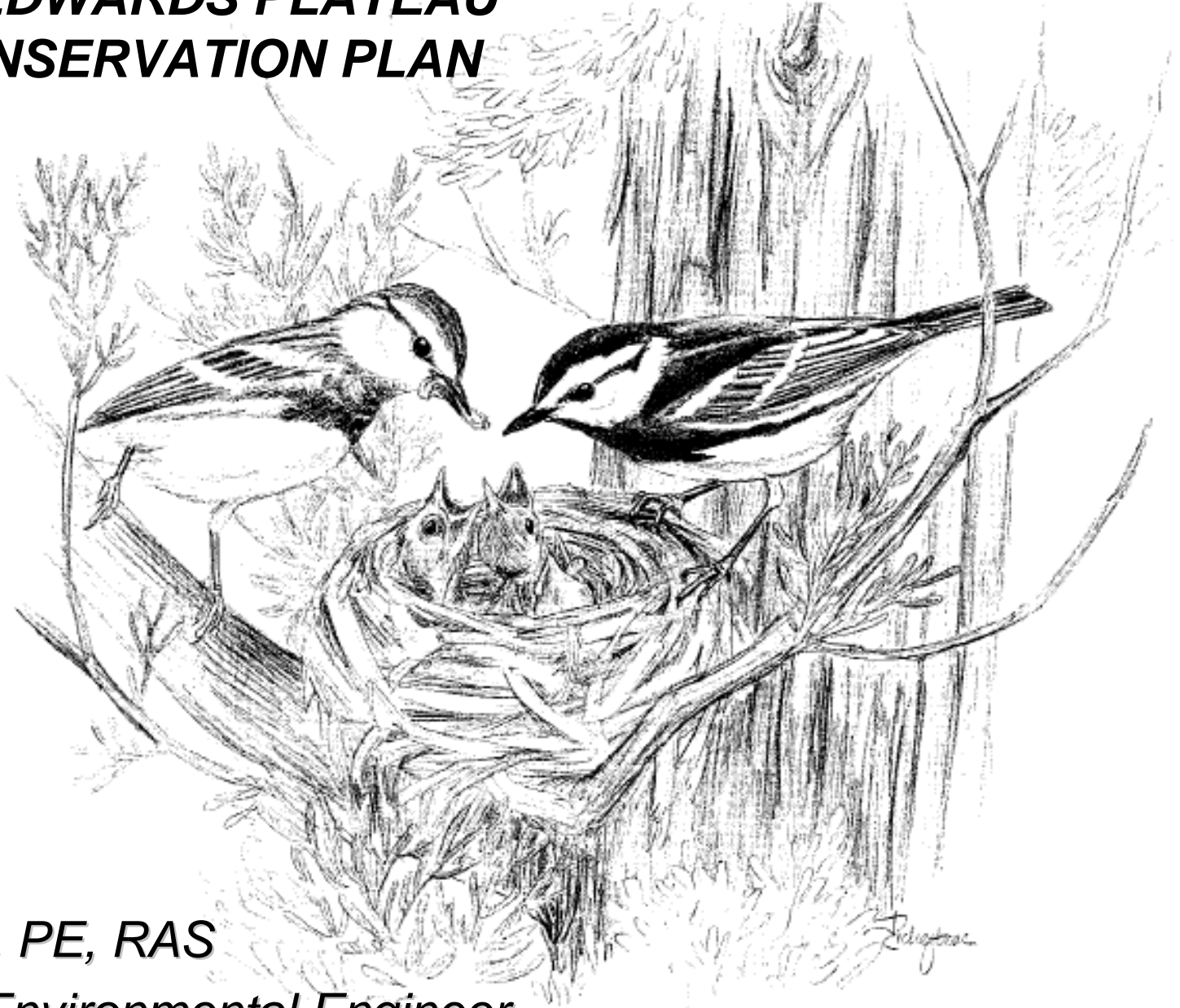


WELCOME

**Everyone needs to sign-in
Include your contact email,
phone & organization**



SOUTHERN EDWARDS PLATEAU HABITAT CONSERVATION PLAN



Andrew Winter, PE, RAS
Bexar County Environmental Engineer



AGENDA

- Sign-in
- Welcome
- Purpose of the meeting
- Brief History
- HCP 101
- Where we are going
- Committees CAC, BAT, AOG
- WEB Site
- Questions and Public Comments
- Adjourn



Welcome and Introductions

- Greater San Antonio Builders Association
- Professional Engineers in Private Practice, Bexar Chapter
- Real Estate Council of San Antonio
- Cude Engineering
- Pape-Dawson Engineering
- Ironstone Development
- CPS Energy
- TXDOT
- SARA
- Northside ISD
- SAWS
- Edwards Aquifer Recovery In Place
- Natural Resource Policy Advisor, Texas
- Comptroller of Public Accounts
- Bexar County
- City of San Antonio
- City of Grey Forest
- City of Boerne
- City of Schertz
- Comal County
- The U. S. Fish and Wildlife Service
- Texas Parks and Wildlife
- US Army, Ft Sam Houston & Camp Bullis
- Loomis Partners & ZARA
- Texas Wildlife Association
- Exotic Wildlife Association
- Bat Conservation International
- Quihi & New Fountain Historical Society
- Alamo Soil @Water
- Greater Edwards Aquifer Alliance
- Preserve Our Water
- Aquifer Guardians in Urban Areas
- Alamo Group of the Sierra Club
- Bexar Audubon
- Medina County Groundwater Conservation District
- Medina County Environmental Action Association
- Alamo Area Master Naturalist
- Friends of Friedrich Park
- Maverick Ranch-Fromme Farm
- Blackjack Ranch L.E.E., LLC
- Hill Country Planning Association
- Scenic Loop - Boerne Stage Alliance
- Mitigation Strategies, L.L.C
- Advanced Ecology Ltd.
- SWCA
- Numerous Private Landowners and individuals



Purpose of this Meeting

➤ Introduce

- A chance for everyone to get to know the other stakeholders
- A chance to understand everyone's interests & issues

➤ Inform

- What the Problem is
- A Solution

➤ Educate

- What the HCP is
- What an HCP can and cannot do for us
- How an HCP would be developed
- How an HCP might work

Species Under Consideration

- **Endangered Species**

- **3 Birds**

- **10 karst invertebrates**

- **18 plants**

- **44 Other Species of Concern**



Karst Protection

“Karst” refers to limestone caves and sinkholes with underground streams

The Edwards Aquifer is the primary drinking water source for over 2 million Central Texas residents

Protecting Karst Critters protects the aquifer



Texella tuberculata 22 GCSNA

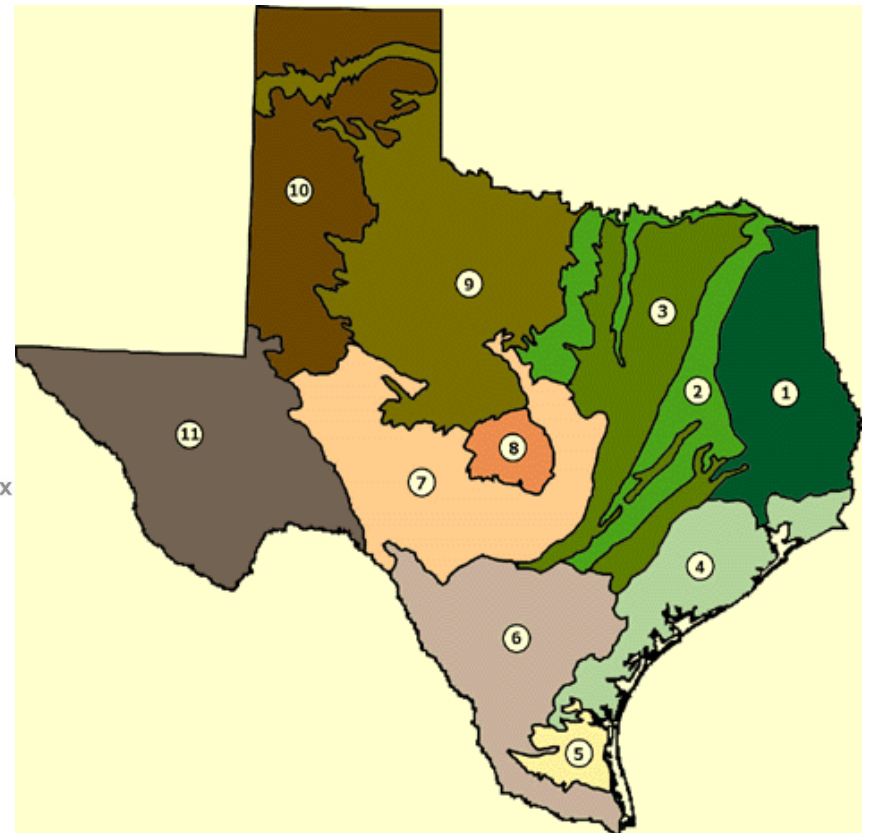
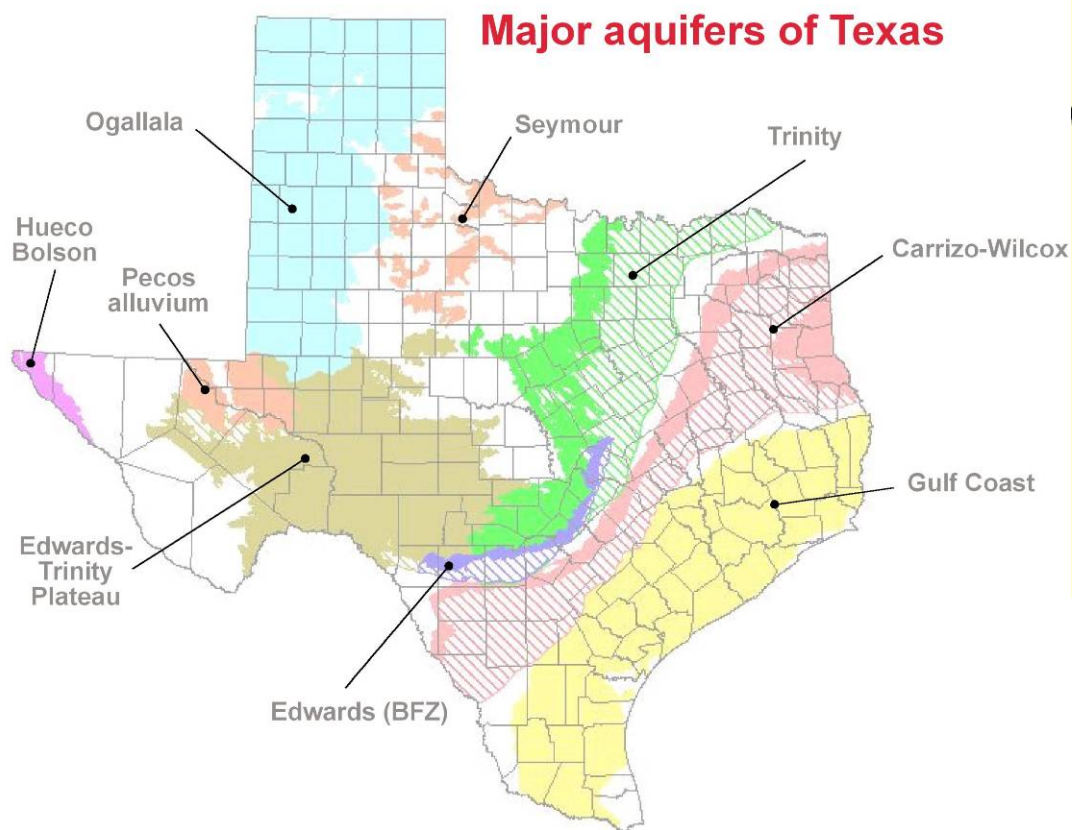
A Brief History

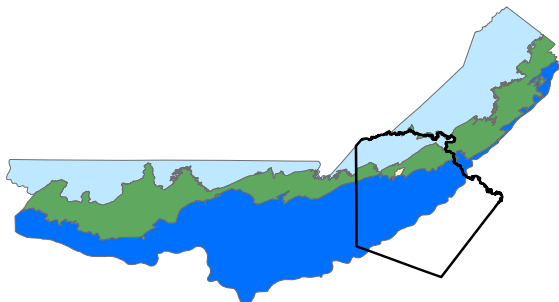
- Explosive Development
- Loss of habitat, Water/Aquifer issues, & Camp Bullis encroachment
- Federal Endangered Species Law
- Public Awareness (newspaper articles, etc)
- Public Concern & Action by our Political Leaders
- County & City Lighting Order / Ordinance
- City, County, Conservation, & Development Team Built
- FWS HCP Grant Submission
- Camp Bullis JLUS
- County RFQ for HCP Consultant
- FWS Grant Funding
- Invitations to this meeting
- Here we are



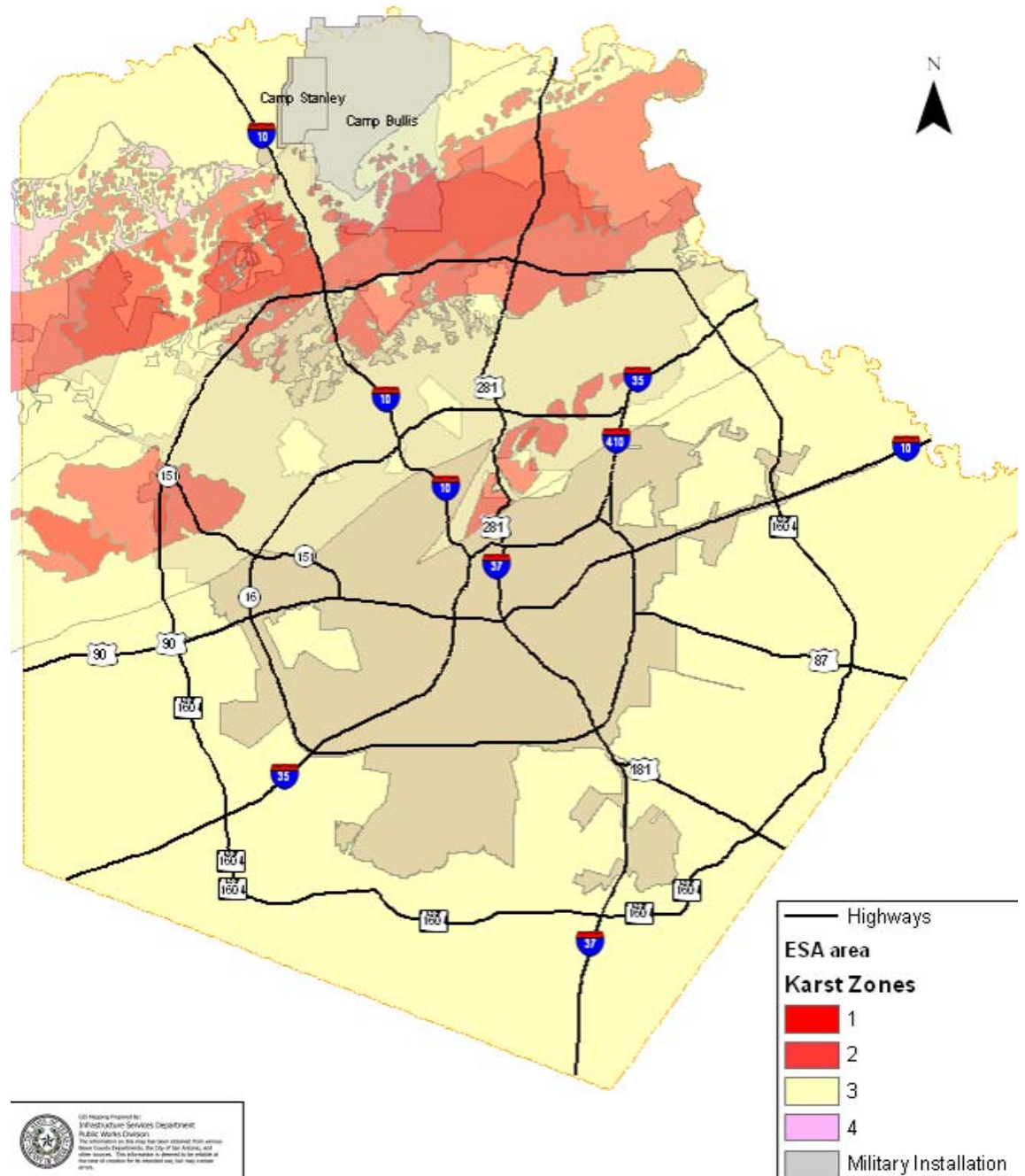
Government Canyon Bat Cave Spider

Texas is the most Ecologically Diverse state in the nation





Edwards Aquifer



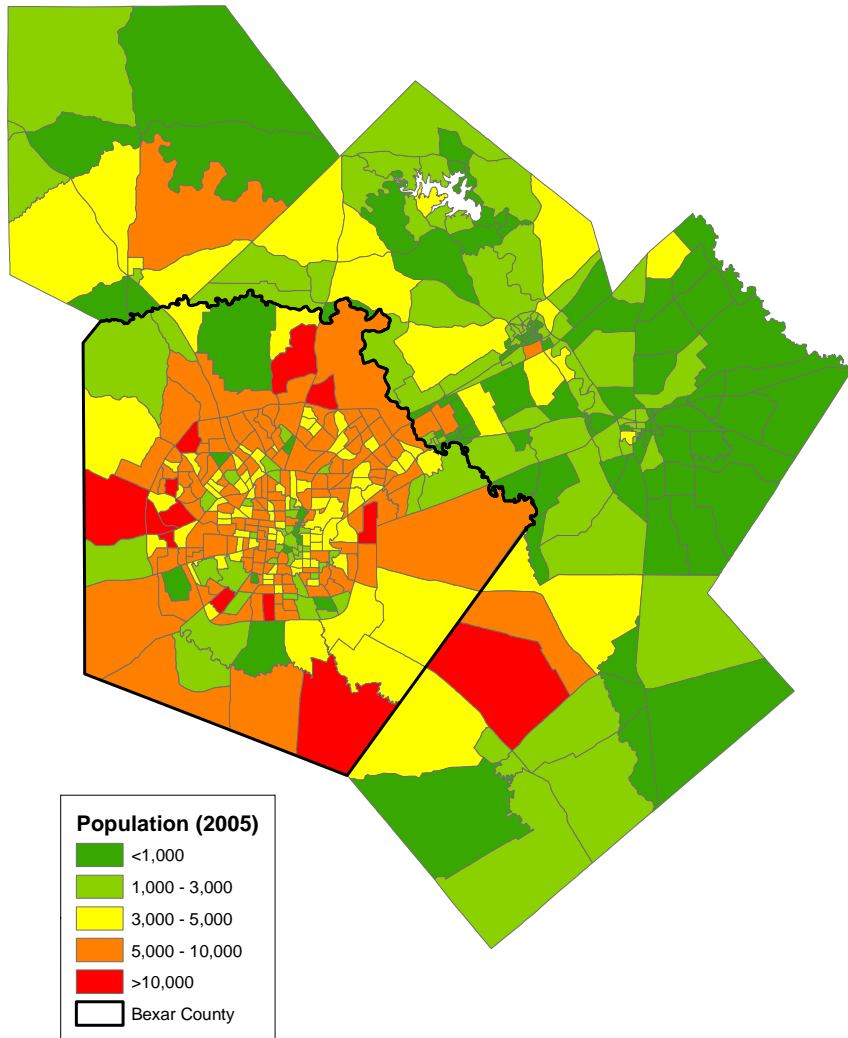
2000



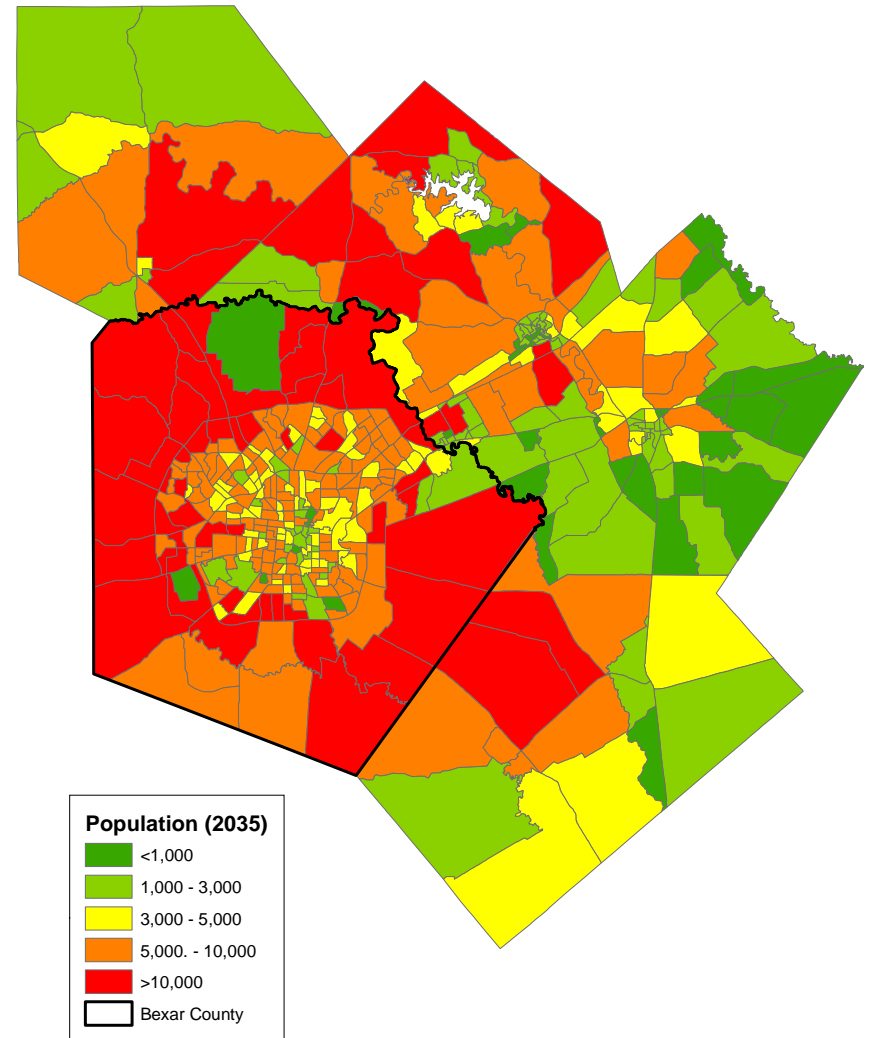


Projected Growth

2005



Projected 2035



HCP 101



Allison Arnold, USFWS

Our HCP Goals

- Provide assistance in the recovery of the listed species
- Provide assistance to prevent new species (threatened species) from being listed
- Provide a tool that allows for cost effective compliance with federal law (the ESA)



What an HCP is not

- It is not mandatory
- It is not intended to stop development – it is a tool to encourage compliant development
- It will not recover the species – it is intended to aid in the recovery of the species
- It is not intended to be a drain on the taxpayers – it should be self supporting



Mormoops megalophylla Ghost Faced

How an HCP might work

1. You want to develop in an environmentally sensitive area
2. You conduct an endangered species survey to determine if your development would result in a “take”
3. You choose to participate in our HCP in order to comply with the Endangered Species Act.
4. You submit an HCP participation application and supporting documents to a our local HCP administrator (TBD)
5. HCP administrator reviews the application, ensures you are in compliance with the HCP and determines your participation fee.
6. If you choose to participate, you pay mitigation fee and become part of our HCP - **Likely a 2 week process

WITHOUT THE HCP

You work individually with the U.S. Fish and Wildlife Service to obtain an individual 10(a) permit - **Likely a 2 year process





With an HCP

There are NO Surprises

There will be NO additional conservation and mitigation measures required of developers

No additional restrictions on the use of natural resources, other than those agreed to in the HCP.

A Deal's a Deal!



Where we are going

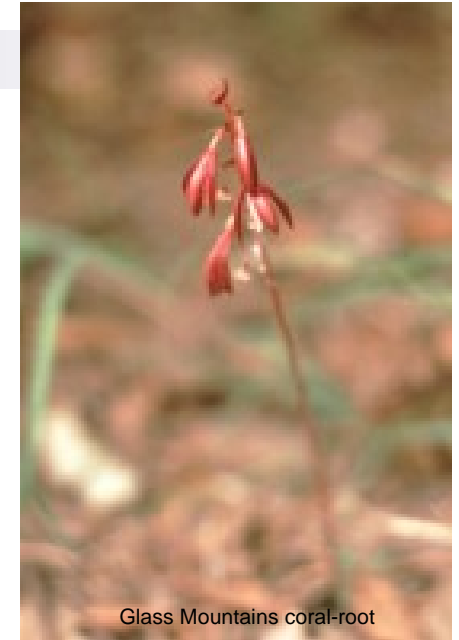


Clif Ladd, Loomis

Funding



Parks' jointweed



Glass Mountains coral-root

USFWS Grant	\$1,340,691.00
Required 25% Local Match	<u>\$ 446,897.00</u>
Total SEP-HCP funding	\$1,787,588.00

Required 25% Local Match	\$446,897.00
City Portion	\$223,448.50
County Portion	\$223,448.50



Tobusch fishhook cactus



Big Red Sage



Correll's false dragonhead

There is no financial commitment from other partners

- 
- A photograph of a water snake swimming in a pond. The snake is long and slender, with a brown and black patterned body, and is positioned diagonally across the frame. Three small ducklings are also in the water, swimming near the snake. The water is dark green and has many small bubbles on its surface.
- **SEP-HCP Stakeholders**
 - **Citizens Advisory Committee (CAC)**
 - **Biological Advisory Team (BAT)**
 - **Agency Oversight Group (AOG)**

SEP-HCP COMMITTEES

SEP-HCP STAKEHOLDERS

- Consists of all the agencies and individuals that have (or will) sign up to participate in the SEP-HCP
- The Stakeholders may recommend representatives for the CAC
- Will be kept informed through a Web page or emails, but can meet if needed
- If the Stakeholders want a general meeting, it will need to occur during both normal business hours and after normal business hours to ensure all Stakeholders can attend
- This group is not required by law



CITIZENS ADVISORY COMMITTEE (CAC)

- The CAC will
 - Advise Commissioners Court in developing and preparing the SEP-HCP
 - Form and level of “mitigation” offered under the HCP
 - Appropriate financing mechanism(s) offered under the HCP
 - Method of participation and calculation of potential mitigation fees
- State law requires the CAC be composed of at least 33% (4 minimum) undeveloped or agricultural landowners within the plan area and 1 TPWD member
- For Example the CAC could be composed of:
 - 5 landowner representatives
 - 4 representatives from the development, engineering, and/or real estate community
 - 4 representatives from conservation groups
 - 1 Government entity members (i.e., City, County, TDOT, Other Counties, Utility providers, etc)
 - 1 TPWD member (required by law)

(This is a total of 15 people, 33% of 15 is 4.9 which equals a minimum of 5 landowners)
- CAC meetings are subject to Texas Open Meetings Act and Open Records Act requirements and will be during evening hours to ensure participation by landowners

CAC Appointments

- Stakeholder groups may each recommend someone to represent their interests on the CAC
- The AOG will review the recommendations and seek additional stakeholder input if needed
- The AOG will then present the list to Commissioners Court for appointment
- Commissioners Court will appoint the CAC
- TPWD appoints one voting member to the CAC





BIOLOGICAL ADVISORY TEAM (BAT)

- Consist of 3 or more Professional Biologists:
 - To the extent possible the SEP-HCP would like the biologists to:
 - experienced in the endangered birds, karst invertebrates, and plants in this area
 - live and work in the local area local area
 - 10(a) permitted if possible
- Consultant biologists may be called upon by the BAT to assist as needed
- All volunteers - not paid positions
- The purpose of the BAT is to provide biological guidance
- The BAT will:
 - The calculation of harm to endangered species
 - The sizing and configuration of the habitat preserves
- State law requires the BAT have:
 - One member appointed by the TPWD, who will serve as Chair
 - One member appointed by the landowner members of the CAC
- Other BAT members will selected by the AOG
- BAT meetings are subject to Texas Open Meetings Act and Open Records Act requirements and will typically be during normal business hours

AGENCY OVERSIGHT GROUP (AOG)

- Not required by state or federal law
- The SEP-HCP is doing this to improve the efficiency, cost effectiveness and communications of the HCP development
- The Purpose of this group is
 - to facilitate and improve coordination and communication between Bexar County, the City of San Antonio, USFWS, TPWD, CAC, and BAT
 - Review progress on each phase, including the completion of all work according to schedule
 - Ensure the various committees and consultant stay on target
 - Act as the consultant's contract monitor and certify payments





WEB Site

- We have www.sephcp.com reserved
(but nothing up yet)
- (also .net, .org., and .info)
- www.sephcp.net
- www.sephcp.org
- www.sephcp.info



Contact Information

Andrew Winter, PE, RAS

233 N. Pecos, Suite 420

San Antonio, TX 78207

Email: awinter@bexar.org

Phone: (210) 335-6487



Eastern Pipistrelle (Eastern Pipistrelle)

QUESTIONS?





INTRODUCTION TO PLANNING

the Southern Edwards Plateau Habitat Conservation Plan

PRESENTATION TO THE KICKOFF MEETING

GREATER SAN ANTONIO BUILDERS ASSOCIATION
3625 PAESANOS PARKWAY, SAN ANTONIO, TEXAS

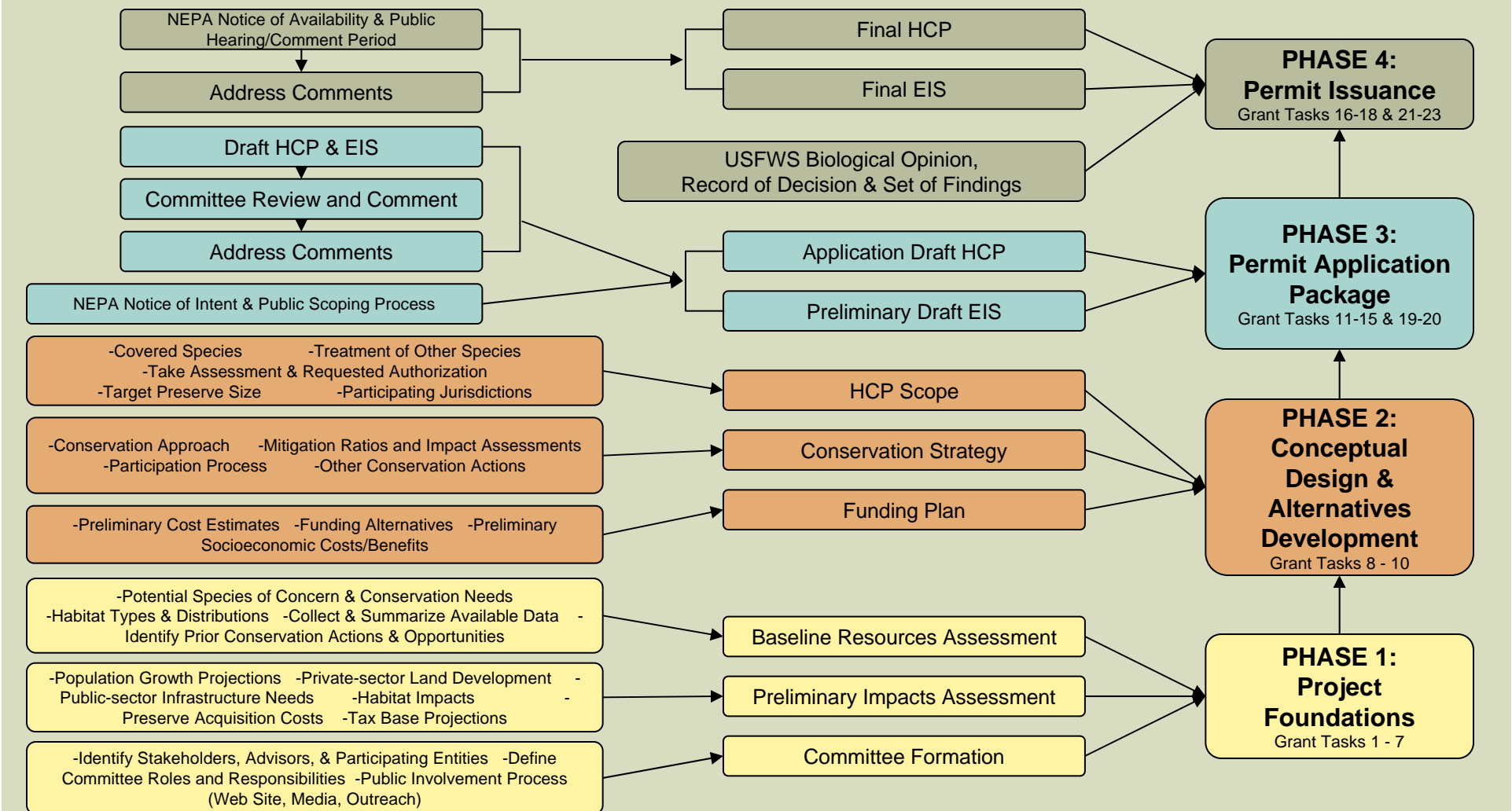
AUGUST 12, 2009



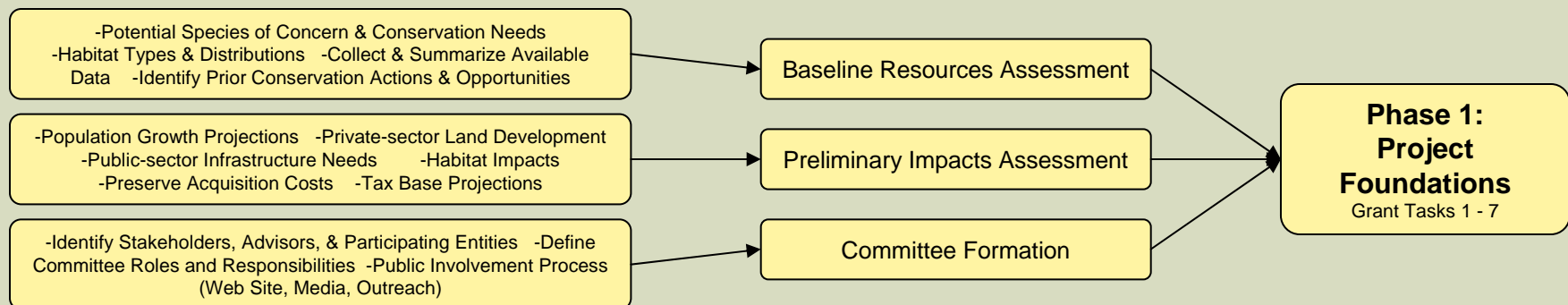
LOOMIS

PARTNERS

PROJECT PHASES



PHASE 1: PROJECT FOUNDATIONS



- Develop the baseline review of the status and condition of species and habitats; population and land development trends; and conservation threats and opportunities.
- Determine scale of potential impacts.
- Identify and contact important stakeholders, and form the SEP-HCP committees.
- Establish processes for work flow, documentation, and communications.



PHASE 1: PROJECT FOUNDATIONS

- Coordination, Outreach, and Information Sharing
 - Design and launch project website
 - Initiate email list for distribution of announcements and notices
 - Develop initial materials about SEPHCP, endangered species, and ESA/NEPA for media distribution and web posting
 - Establish protocol for receiving and responding to public inquiries and comments
 - Establish protocol and process for regular status updates

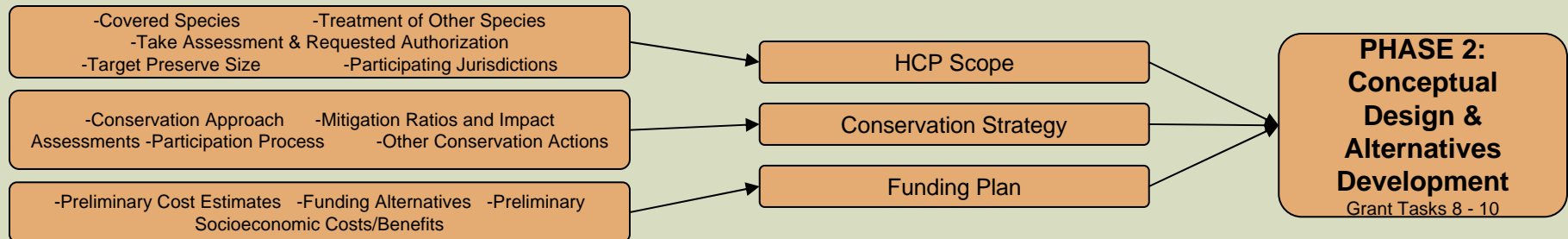


PHASE 1: PROJECT FOUNDATIONS

- Committee formation
 - Define purpose, role, and responsibilities of committees and committee members (CAC, BAT, AOG)
 - Identify potential CAC and BAT members
 - Develop protocol for committee work (such as meetings, posting requirements, agendas and materials, etc.)
 - Outreach to potential committee members
 - Commissioners Court appointment of CAC and BAT members
 - Landowner and TPWD appointment of certain CAC and BAT members
 - Initial committee briefings on project, ESA, NEPA, process, etc.



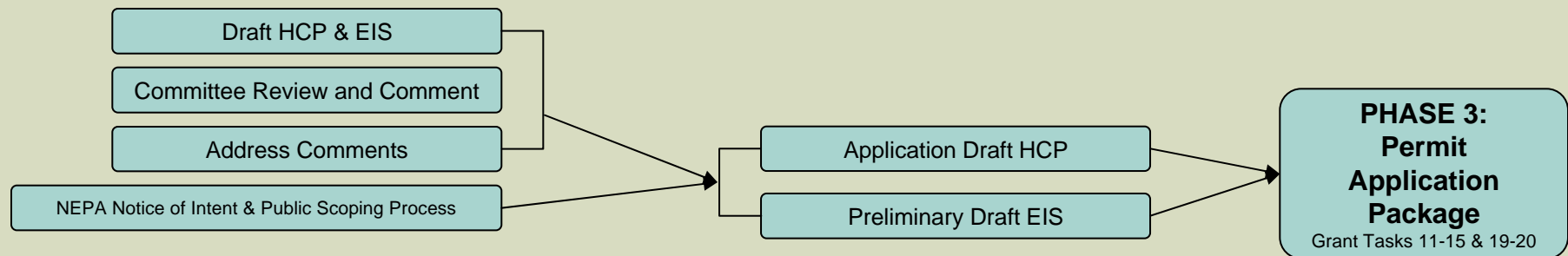
PHASE 2: CONCEPTUAL DESIGN & ALTERNATIVES



- Develop conceptual alternatives for the scope, conservation strategy, and plan funding.
- Achieve committee consensus on a preferred conceptual plan.



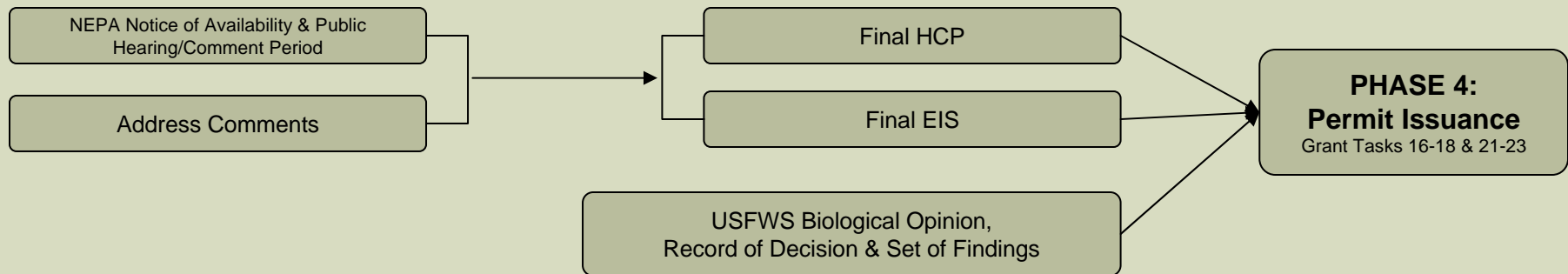
PHASE 3: PERMIT APPLICATION



- Prepare the application draft HCP.
- Conduct NEPA scoping and prepare preliminary draft EIS.



PHASE 4: PERMIT ISSUANCE



- Assist the USFWS with various documents and processes, including Federal Register notices, organizing NEPA public hearings, TPW code hearing, addressing comments.
- Finalize the HCP and EIS.



PROPOSED SCHEDULE

END OF MAY 2012		
MAJOR MILESTONE: Complete Phase 4 Permit Issuance	Address public comments on draft HCP and draft EIS. Finalize HCP and assist USFWS with finalization of EIS and other permitting documents, as appropriate. Permit issued.	4 mos. FEB 2012
	Local USFWS office review and comment. NEPA Notice of Availability, public hearing, and 60 to 90-day comment period on draft HCP and draft EIS.	7 mos. JULY 2011
MAJOR MILESTONE: Complete Phase 3 Permit Application Package	Prepare Final Application Draft of HCP (incorporating comments from the first draft) and a complete draft of the PDEIS for approval by committees and Client. Submit draft HCP and PDEIS to USFWS as part of application for ESA Section 10(a) permit.	5 mos. FEB 2011
	Prepare First Draft of HCP and Alternatives Considered/Affected Resources sections of the PDEIS. Present to committees for review and comment. Collect and address comments. Conduct NEPA scoping process, including Notice of Intent, public scoping meeting, and 30-day comment period.	7 mos. JULY 2010
MAJOR MILESTONE: Complete Phase 2 Conceptual Design and Alternatives	Present conceptual alternatives to committees and identify consensus opinion regarding the preferred alternative for HCP. Preferred alternative scope, strategy, and funding mechanism form the framework of a Preliminary Draft HCP.	2 mos. MAY 2010
	Develop conceptual alternatives for HCP scope, conservation strategy, and funding plan.	2 mos. MAR 2010
MAJOR MILESTONE: Complete Phase I Project Foundations	Complete interim deliverables for Baseline Resources Assessment and Preliminary Impacts Assessment. Present assessments to committees and discuss early ideas and concerns.	1 mos. FEB 2010
	Establish process for committee involvement. Identify, contact, and appoint committee members. Initial briefings of committee members on overall ESA process and HCPs. Begin technical documents for species, habitats, population, and land development.	4 mos. NOV 2009
	Complete contracting arrangements. Preliminary project planning and scoping. Establish processes for communications and work flow. Early coordination with potential stakeholders and agencies.	3 mos. AUG 2009



QUESTIONS AND DISCUSSION

